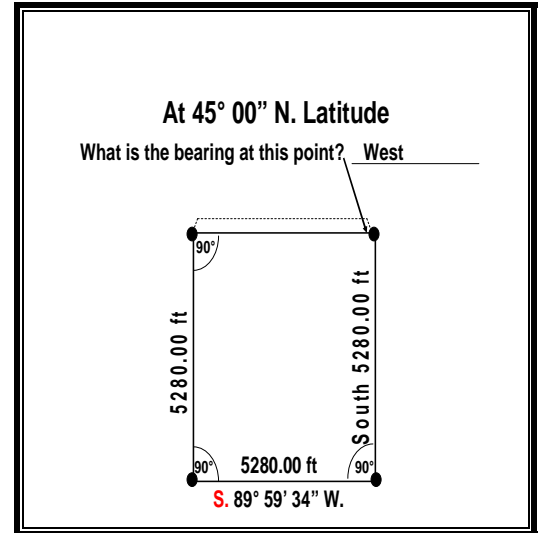


STANDARDS FOR INDIAN TRUST LANDS BOUNDARY EVIDENCE – PART 2

What is the bearing at this point? What is the bearing of that line at its easterly point, where it leaves the meridian on the east? Well the bearing there is west. It is right on our original meridian, where we had a north south meridian, we have a 90-degree, it is west. But what is the bearing at the other end?



The bearing at the other end 89, 59, 08, that 52 seconds of convergency so the mean is 89, 59, 34. And the bearing of the west boundary is 0 degrees, 0 minutes, 52 seconds **northwest**. That 52 seconds, those two section lines **diverge** by 52 seconds if they are a mile apart at a latitude of 45 degrees. And that information can be found in those charts.

So what do we want to report for a bearing over here on the west boundary of the section? Well, it depends on what you are rounding it to, if you are rounding to the nearest half a minute, then you are going to report north 1 minute **west**.

That is why on those original surveys you see that so often, north 1 or 2 minutes **west** on that line. If you are carrying it out to the nearest ten seconds, then you are going to round it to 50 seconds. Whatever you are rounding it to, though; we want the true bearing of that line.

